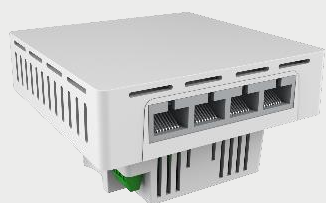


Wi-Fi 6 AX 3000 Gigabit in-Wall PoE Access Point Central & Cloud Management, 4 Gigabit Ports

AirCloud InWall-U630AX

airlive®



Wi-Fi 6
AX3000

Central
Management
Supported

Cloud
Management
Supported

Live Status
Monitor

AP/Gateway
Mode

Support
OFDMA

4 x Gigabit
LAN Ports

Seamless
Roaming

FIT/FAT
Mode

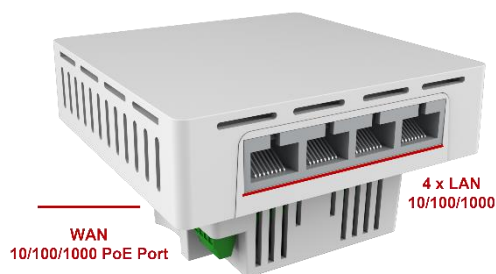
48V PoE

Overview

Multi function in-Wall type High Speed Gigabit Cloud Access Point

The Airlive InWall-U630AX is a multi function in-Wall Wi-Fi 6 compliant 3000Mbps Dual Band Access Point with 4x 1Gbps LAN ports and 1x 1Gbps WAN PoE input port. Designed as In-Wall type AP, it is the ideal AP for Home, Modern Smart Building, or Hotel.

It can work as a standalone access point at home or small WLAN applications when working as a FAT AP. In case a large numbers of Aps is installed, central management or cloud management might be preferred, then it can be connected to the AirLive WLAN controller or AirCloud for efficient management and monitor live status anywhere any time.



Wireless Seamless Roaming

Moreover, the InWall-U630AX supports Wireless Seamless Roaming technology 802.11r/802.11k/802.11v and Fast BSS Transition (FT) that users can stay connected and productive while on the move. These technologies work together to allow devices to quickly and seamlessly switch between access points without interrupting the connection or requiring the user to manually reconnect. This technology is particularly useful in environments where users need to move around, such as in large offices, airports, shopping malls, and campuses.



Features

- Wi-Fi 6 11a/b/g/n/ac/ax compliant
- OFDMA, MU-MIMO
- 2T2R 3000Mbps Wireless High Speed (574Mbps + 2402Mbps)
- 20/40/80/160Mhz Channel
- Concurrent dual bands
- Seamless Roaming
- 1 x 10/100/1000mbps WAN
- 4 x 10/100/1000mbps LAN
- 802.3af PoE power input (WAN)
- FIT/FAT Operation mode
- In-Wall type, for placement inside a wall socket.
- AP and AP Gateway Operation Mode
- Cloud Management Support via AirCloud
- AC Controller Support with AirLive WLAN-128GM/64GM
- Support hardware watchdog function, automatic recovery of abnormal devices, maintenance free.
- Up to 8 Multiple SSID
- VLAN Support in AP Mode
- QoS in AP Gateway Mode
- URL/MAC/IP Filtering
- Wi-Fi Timer

Wi-Fi 6 AX 3000 Gigabit in-Wall PoE Access Point Central & Cloud Management, 4 Gigabit Ports



AirCloud InWall-U630AX

Advanced Management

Flexible Operation - Central Management, Cloud Management, Stand-Alone AP

The AirLive InWall-U630AX can be an FIT AP or FAT AP. It can work as a standalone Access Point or Gateway for home or small WLAN applications. For Large Enterprises or organization, such as Hotel, the InWall-U630AX can work with AirLive Wireless Controller or AirCloud for efficient central and cloud management.

24/7 365 Central and Cloud management for unlimited APs via AirCloud

Cloud Control: the AirLive InWall-U630AX can be managed through the AirCloud once it has been added to the Cloud. This provides remote control from any location, making it advantageous for large networks of Access Points as local access is not necessary and support can be provided from a remote office. Additionally, multiple levels of control can be assigned in the Cloud, ranging from admin to viewer rights. Access Points can be easily added or removed at any time.



Central Management via AirLive Wireless Controller

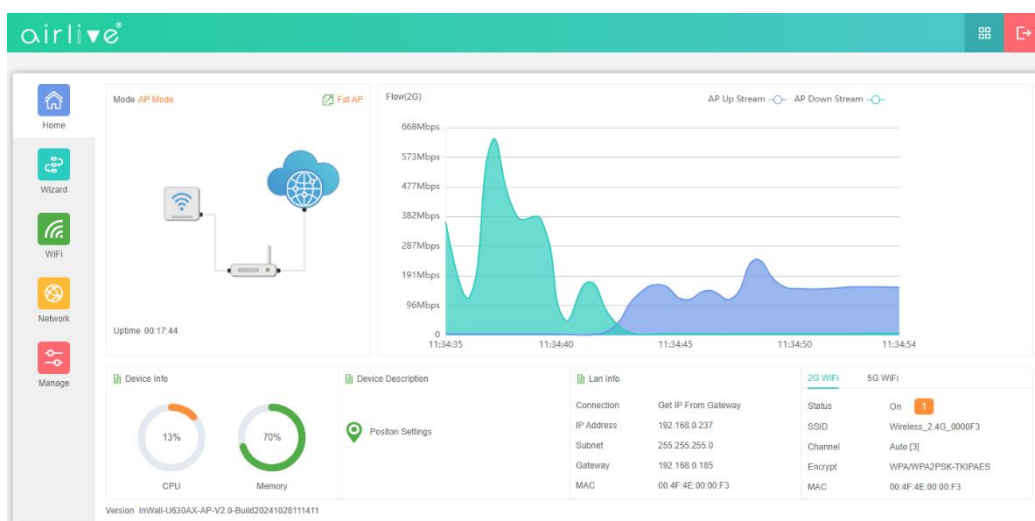
Fit mode is a setting for the InWall-U630AX Access Point that allows it to be controlled by an AirLive WLAN Access Controller. The WLAN controller manages all wireless settings, encryption, and other functions, serving as the central control hub for the InWall-U630AX Access Point. Fit mode is ideal for SMB or large enterprise setups where multiple access points need to be controlled at once. By using Fit mode and a WLAN Access Controller, it can manage all connected APs in a single location; setup time and complexity can be greatly reduced.

Works as standalone AP for Home, Modern Resident Building, or SOHO Office

Fat mode: The InWall-U630AX Access Point functions as a standalone device with all wireless and encryption functions being controlled within the AP itself. This mode is more suitable for small setups like residential or offices with fewer APs. The Fat mode supports two operation modes - AP mode and AP Gateway mode. In AP Gateway mode, the InWall-U630AX works as a gateway and uses its WAN port connecting to a modem/router via PPPoE, DHCP, or Static IP. In AP mode, the InWall-U630AX can be connected to an existing network and work without the WAN port features.

Live Status and Monitor

Monitoring your wireless internet usage by live stream graph, you can gain real-time insight into your network activity and make informed decisions about managing your internet resources.



Model	InWall-U630AX AX3000 Access Point
<p>Device Interface</p> <ul style="list-style-type: none"> • Main Chip: MTK, Dual Core MT7981B • Flash:16MB • RAM:256MB • Ethernet (LAN): 4 x RJ45 10/100/1000mbps • WAN (PoE): 1x RJ-45 10/100/1000mbps • Wi-Fi: 802.11b/g/n/n/ac/ax 2T2R(2.4Ghz), 802.11a/n/ac/ax 2T2R (5Ghz) • Button: Reset x 1 • Power Input: 1 x 48V (802.3af PoE) • Antenna Connector: Internal Wireless Antenna 2x3dBi (2.4G), 2x3.3dBi (5G) <p>WAN</p> <ul style="list-style-type: none"> • WAN: PPPoE, DHCP, Static IP, (Bridge (AP Mode)) <p>Wi-Fi</p> <ul style="list-style-type: none"> • Standard: IEEE 802.11a/b/g/n/ac/ax, 2x2, 20/40/80/160 MHz channels. • Functions: Multi-SSID 8 (4 per radio), SSID hidden ,SSID isolation, Band Steering, RF power adjustable, Wi-Fi time on/off to save energy • Security: WPA/WPA2PSK-TKIPAES, WPA3PSK-TKIPAES • Modulation : OFDMA, 1024QAM • Seamless Roaming: 802.11k, 802.11v, 802.11r • Wi-Fi Advanced: Wireless client isolation • Wireless Channel • 2.4G:1~13 (CE Channel) (region dependent) • 5.8G: 36~48, 36~64,100~140,149~165 (region dependent) • Wireless Speed: 3000Mbps Wireless High Speed (574Mbps + 2402Mbps) • Wireless TX Power 2.4G (AX): ≤16.5dbm, 5.8G (AX): ≤15dbm • ppm: ±20ppm • Wireless seamless roaming technology a combination of technologies, including Fast BSS Transition (FT), 802.11r, and 802.11k. These technologies work together to allow devices to quickly and seamlessly switch between access points without interrupting the connection or requiring the user to manually reconnect. 802.11r facilitates fast handovers by pre-authenticating devices with the next access point. 802.11k provides better signal information for device decisions on which access point to connect to. 802.11v offers QoS information for device selection of the best access point based on its needs. 	<p>Security</p> <ul style="list-style-type: none"> • Filter Rule: URL Filter/Mac Filter/IP Filter • URL/MAC/IP filtering: White list/Black List. <p>DMZ DMZ</p> <p>Port Forwarding Rule/Range TCP/UDP</p> <p>VLAN VLAN support SSID Max 4 per Band</p> <p>Cloud AirCloud access support in Gateway/AP Mode</p> <p>FIT/FAT Operation Mode</p> <ul style="list-style-type: none"> • FIT Mode: AP works with AC Controller (Enterprise) • FAT Mode: AP works standalone (Home use) <p>Management</p> <ul style="list-style-type: none"> • Web-UI, Remote Management, WLAN Controller, Cloud Management System <p>DDNS Oray</p> <p>Max Concurrent Users</p> <ul style="list-style-type: none"> • Support user quantity limited, Max 64 users to access each band. Max 128 connections per band. <p>Parental Control (Gateway Mode)</p> <ul style="list-style-type: none"> • Mac Address Filtering, URL Filtering, IP Filtering <p>AP/AP Gateway Mode</p> <ul style="list-style-type: none"> • AP: In this mode, the AP Wireless and Cable Interface are bridging together. Without NAT, Firewall and all network related functions. • AP Gateway: In this mode, the WAN page is enabled and PPPoE, DHCP or Static IP can be selected. NAT is enabled and PC's in LAN ports share the IP to ISP through WAN port. <p>VPN Pass Through (Gateway Mode)</p> <ul style="list-style-type: none"> • IPsec, PPTP, L2TP <p>Data Statistics</p> <ul style="list-style-type: none"> • WAN Down Stream, WAN Up Stream • Wi-Fi Analyzer (2.4 and 5Ghz) <p>Multiple Language English/Spanish</p>

AirLive

Model	InWall-U630AX AX3000 Access Point
<p>Lightning Surge / ESD Protection: Surge: Common Mode: 1K, Differential Mode: 0.5K., ESD: Air: ±8K, Touch: ±6K</p> <p>Environment</p> <ul style="list-style-type: none">• Operating temperature: -20°C ~ +40°C• Storage Temperature: -40°C ~ +70°C• Humidity: 5% ~ 95% (non-condensing) <p>Standard package of InWall AP</p> <ul style="list-style-type: none">• Product size: 8.6 x 8.6 x 4.8 cm(L*W*H)• Package size: 12.0 x 11.0 x 6.5cm(L*W*H)• Package Weight: N.W: 0.2345kg; G.W: 0.317kg• Package content: 1 x InWall Access Point, 1 x Screw Set, 1 x QIG. <p>Standard carton package</p> <ul style="list-style-type: none">• Quantity: 40pcs / 1 carton• Dimensions 46.5 x 35.0 x 26.5cm (L*W*H)• Weight 12.94kg (G.W) <p>Ordering information</p> <ul style="list-style-type: none">• AirLive AirCloud InWall-U630AX 11ax 3000Mbps Gigabit InWall PoE Access Point Central and AirCloud, Seamless Roaming	

AirLive